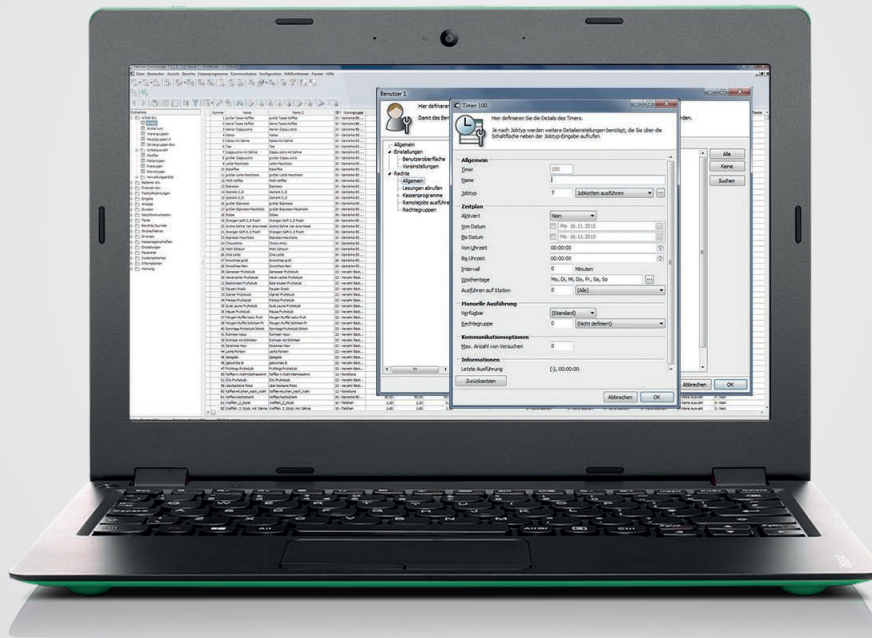


DATA SHEET
VECTRON COMMANDER 7



Communication software
for all Vectron POS-systems

System requirements

Stand alone installation

Client operating system Windows Vista, Windows 7, Windows 8, Windows 10, Windows 11, Windows Server 2019, Windows Server 2022.

PC according to system requirements of the operating system.

Resolution min. 1024 x 768 pixels (higher resolution strictly recommended).

Min. 100 MB free hard disk storage. However, for storage of daily sales data a considerably higher capacity is required; depending on the number of POS systems and the amount of data to be stored, it may be several GB every year.

Network installation

Network installation Server:

Server operating system (file server) Windows 2000 or higher, Windows Server 2003, Windows Server 2008 R2, Windows Server 2012.

PC according to system requirements of the operating system.

Resolution min. 1024 x 768 pixels (higher resolution strictly recommended).

Min. 100 MB free hard disk storage. However, for storage of daily sales data a considerably higher capacity is required; depending on the number of POS systems and the amount of data to be stored, it may be several GB every year.

Network installation Client:

Client operating system #Windows Vista, Windows 7, Windows 8, Windows 10.

PC according to system requirements of the operating system.

Resolution min. 1024 x 768 pixels (higher resolution strictly recommended).

General

Printer (optional):

Windows-printer (incl. suitable Windows-printer driver).

Communication:

Serial communication: min. one free serial port.

Modem communication: Windows-compatible modem (TAPI) or standard modem (AT-compatibel).

Communication per Windows-Pipe (only for Vectron POS PC).

Communication per network.

Compatibility note

Windows 7, Windows 8, Windows 10:

- The declaration of compatibility exclusively refers to the basic installation.

Known restriction:

- Hardlock-driver functions: error message occurs after standby of Windows

Following options are not tested and supported:

- Installations with virtualization solutions (e.g. VM-ware etc.)
- Citrix installations
- Other special cases of system configuration/-architecture

Compatibility note

Windows Server 2008 R2:

The declaration of compatibility exclusively refers to the basic installation; the optional setting of virtualization function in Windows Server 2008 R2 was not tested by Vectron and will not be supported.

Known restrictions:

- Configurations in context with SMB2 can lead to error messages
 - Hardlock-driver functions: an error message occurs after standby mode of Windows
-

Windows Server 2012 and 2016:

The declaration of compatibility exclusively refers to the basic installation; the optional setting of virtualization function in Windows Server 2008 R2 was not tested by Vectron and will not be supported. For operating the Vectron Commander on Windows 2012 and 2016 an OS-specific driver has to be installed for correct identification of the licence hardlock.

Known restrictions:

- Configurations in context with SMB2 can lead to error messages
 - Hardlock-driver functions: an error message occurs after standby mode of Windows
-

Following options are not tested and supported:

- Installations with virtualization solutions (e.g. VM-ware etc.)
 - Citrix-installations
 - Other special cases of system configuration/-architecture
-

We recommend installing Vectron-programs under Windows Vista / Windows 7 / ff under „C:\Vectron...“ instead of under „C:\Programs...“! You should make sure that all relevant Vectron Commander users have „full access“ (read- and write authorization) to the directory.

Features

General

Supports up to 2000 POS systems

Fully configurable number of timer jobs

Fully configurable number of job chains

Fully configurable number of users with individual rights

Fully configurable number of report templates

Fully configurable number of output report definitions

Standard 50 supplied output report definitions; fully editable and extendable

Programming

Supported programs of Vectron POS software:

Vectron Commander 7 handles the complete programming and configuration of connected Vectron POS-systems, e.g.:

- PLUs, departments, modifiers etc.
- Operators, waiters, clerks etc.
- Button- and layout programming
- GC programming

The programming is further facilitated by means of „Assistants“ (plug-ins). These are sub-programs, which take up special parts of the programming and „visualize“ them in a particularly user-friendly way, e.g. keyboard- and button-programming, plausibility check (recognition of faulty configuration) etc.

General:

- Storage of program data per POS system
- Via „program link“, defined program parts are taken over automatically from other POS systems (comparable to „Master program ECR“ in Vectron Commander 6)

Reports

Supported Vectron POS-reports and data:

Vectron Commander 7 supports the polling of all values collected in Vectron POS-software, e.g.:

- Transaction report
- PLU report
- Electronic journal

In addition to standard reports Vectron Commander 7 also supports the polling of shift reports and saved reports.

Report generator:

Reports are configurable to the greatest possible extent. For instance the following standard reports are supplied:

- Transaction report
- PLU report
- Operator report
- PLUs per GC
- PLUs per operator

Reports

Additional functions in reporting:

- Combine pollings
 - Redate pollings
 - Subsequent booking of faulty or missing receipts
-

General features:

- Storage of sales data („Polling“) under ECR/Date/Time (any number of pollings per POS system)
 - Evaluation for any POS system and any period
 - Additional filter options, e.g. by weekdays, „only Z-pollings“
-

Miscellaneous

Vectron POS Anywhere:

- Remote control of Vectron POS-systems
 - Monitoring of operations
-

Vectron POS software update:

- Individual Vectron POS-systems or POS-networks can be updated easily with a current POS system program version
 - Flash update per modem possible
-

Vectron POS Dump:

- Calling dumps per timer
 - Transfer of dumps
-

Data interface:

Connection to external software (bakery software, hotel software, stock control, monitoring software, working hours registration software, card system software)

- Import of program data
 - Automatic export of sales data
-

Communication module:

Supports several parallel communication jobs, i.e. the communication with several POS systems at the same time.

Additional program

Vectron Commander Journal Report:

- Visualization of POS system journals
 - Display and printout of receipt from journal report
 - Various filters for reducing the output to determined periods, operators, media, modifiers, PLUs or pollings
-